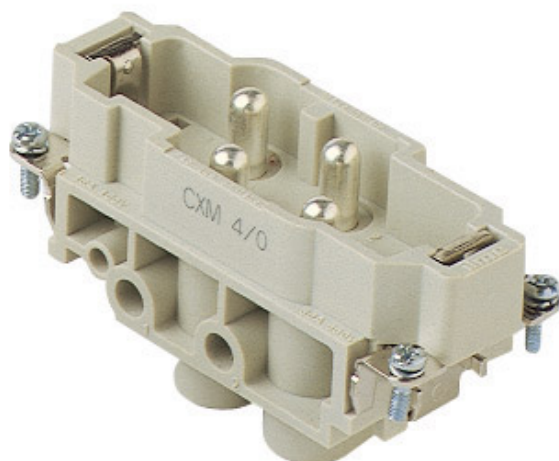






Product Sheet

Part Number: CXM 4/0



Family	CLASS insert series
Version	screw terminal connections
Series	CX
Product type	with male contacts
Model	male insert
Reference standard	EN 61984 (2001-11)
Contact type	silver plated
No. of poles	4 poles + 
Voltage (V)	690V
Current (A)	80A (A.C./D.C.)
Wire section	4mm ² - 16mm ²
Awg size	12 - 6
Quality mark	 600V  GOST 
IP degree of protection	IP20 degree of protection without enclosure; IP65, IP66, IP67, IP68 (EN 60529) and IP69K (DIN 40050 - 9) with enclosure

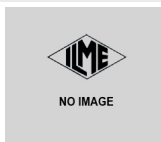
The information and the dimensions contained are not binding and may be changed without prior notice.
The drawing's dimensions are in mm.

Fixing centre distance size "77.27"

Impulse withstand voltage 8kV

Pollution degree 3

Notes



- CX 4/0 inserts
- 80A contacts
- without plate for section conductors:
 - 4 - 16 mm² - AWG 12 - 6
- conductors stripping length: 14 mm
- terminal screw torque: 2.5 Nm
- characteristics according to EN 61984:
 - 80A 690V 8kV 3
 - 16A 400V 6kV 3
 - 16A 400/690V 6kV 2
- rated voltage according to UL/CSA: 600V
- insulation resistance: > 10 GOhm
- ambient temperature limit: -40 °C ... +125 °C
- are made of self-extinguishing thermoplastic resin UL 94 V0
- mechanical life: > 500 cycles
- contact resistance: < 0,3 mOhm (4 poles)
- inserts for applications with temperatures up to 180 °C, available on request
- enclosures: size 77.27:
 - C-TYPE IP65/IP66
 - C7 IP67 stainless steel lever .
 - V-TYPE IP65/IP66
 - stainless steel lever
 - T-TYPE IP65 insulating
 - JEI zinc-plated steel lever
 - BIG hoods
 - aggressive environments
 - EMC
 - central lever
 - IP68
- panel supports: COB

The information and the dimensions contained are not binding and may be changed without prior notice.
The drawing's dimensions are in mm.